



NEXT GENERATION
MALE SUI TREATMENT

SURGICAL VERSATILITY
REDEFINED



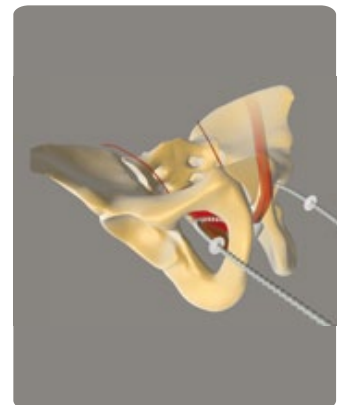
Argus One is based on the original Argus Adjustable System, which has 10 year - clinical data demonstrating consistently effective results in the treatment of post radical prostatectomy stress urinary incontinence.

VERSATILITY

- Retropubic or Transobturator approach.
- All-in-one surgical kit for standardized and reproducible procedure.
- Short learning curve and minimally invasive procedure.
- For mild, moderate and severe male SUI cases.
- No restrictions for patients who underwent previous surgeries or External Beam Radiation Therapy (EBRT).



Retropubic Approach



Transobturator Approach

ADJUSTABILITY

- Precisely controlled technique to set the correct urethral resistance during the procedure.
- Post-operative tension adjustments can be performed according to the needs and conditions of each individual patient.

ACCURACY

- Standardized and reproducible method to set the adjustment retrograde pressure (ARP) to achieve continence.¹

CLINICAL EVIDENCE

- Long-term results show up to 87.5% cure rate achieved with Argus.²⁻³⁻⁴⁻⁵

REFERENCES:

- 1-Rutkowski M., Hübner W.A. Landesklinikum Korneuburg, Dept. of Urology, Korneuburg, Austria. Male sling adjustment: Can the retrograde leak point pressure help to reduce postoperative urethral lesions?. European Urology Supplements - February 2012 (Vol. 11, Issue 1, Page e291, DOI: 10.1016/S1569-9056(12)60288-7).
- 2-Hübner, W. A. et Al. Adjustable bulbourethral male sling: experience after 101 cases of moderate-to-severe male stress urinary incontinence. BJU Int. 2011 Mar;107(5):777-82. doi: 10.1111/j.1464-410X.2010.09619.x. Epub 2010 Oct 21.
- 3-Romano SV. et Al.. Long-term results of a phase III multicentre trial of the adjustable male sling for treating urinary incontinence after prostatectomy: minimum 3 years. Actas Urol Esp. 2009 Mar;33(3):309-14.
- 4-Deirdre M. Bochove-Overgaauw, Bart Ph. Schrier. An Adjustable Sling for the Treatment of all degrees of male stress urinary incontinence: Retrospective evaluation of efficacy and complications after a minimal follow-up of 14 months. The Journal of Urology - April 2011 (Vol. 185, Issue 4, Pages 1363-1368, DOI: 10.1016/j.juro.2010.11.075)
- 5-Bauer R1, Rutkowski M2, Roosen A1, Pfau A2, Huebner W2. 1.Ludwig-Maximilian-University, 2.Clinic of Korneuburg, Dept. of Urology, Korneuburg, Austria. Efficacy and complications of the Argus T sling. 42nd Annual Meeting of ICS. Beijing, China. 2012. Abstract#782.

argus
adjustable system **one**



NEXT GENERATION
MALE SUI TREATMENT

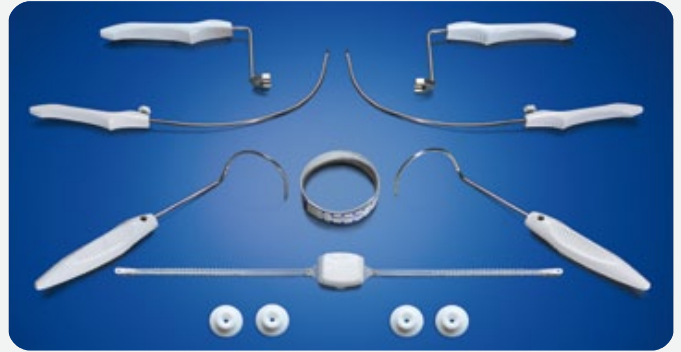
SURGICAL VERSATILITY
REDEFINED

Promedon
— People + Innovation

SURGICAL VERSATILITY REDEFINED

NEXT GENERATION MALE SUI TREATMENT

- Argus One Adjustable System offers two alternatives to choose INTRAOPERATIVELY the best technique - retropubic or transobturator - for each indication and patient condition.
- Broadest range of SUI indications.
- Adjustability: Intra-operative and post-surgery tension adjustments.
- Reliable results even in challenging cases.

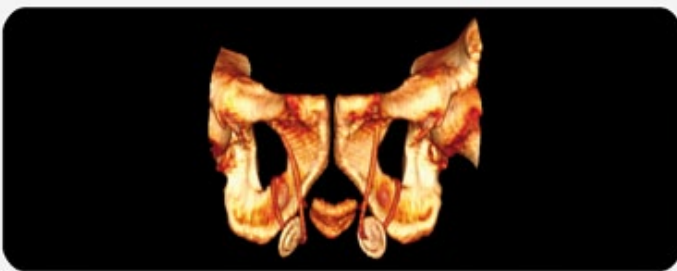


INNOVATIVE DESIGN FOR HIGH PERFORMANCE

- The suburethral pad fits the urethral anatomy to provide optimal support with less tension on fixation arms.
- The anchoring system offers an excellent balance between stability and adjustability. The radiopaque components provide an accurate reference for post-operative controls.



Argus Biomechanics - 3D CT Scan



REFINED INSTRUMENTATION FOR BETTER RESULTS

- The highly evolved tunneling system features a special design to simplify surgical steps. The hooked needles tip allows for a safe insertion and deployment of the implant fixation arms.





ORDERING INFORMATION

ARGUS ONE ADJUSTABLE SYSTEM ORDER NUMBER: KIT-MOL-01

- 1 Argus One L implant + 2 rings (washers) (Code: S-42M-AFhOL)
- 2 Adjustment rings (washers) (Code: AR-M)
- 2 Retropubic Needles (Code: DPN-MA).
- 2 Transobturator Needles (Code: DPN-HHA).
- 2 Ring (washer) positioners (Code: P-02-A).
- 1 Ruler (Code: R-PU).



www.promedon.com

B-30-42 (05) / 20-May-15

